



Challenge



Hot Topics



Dangers of bird flu

Be alert to bird flu!



THE government called for a **poultry cull** on 11 June after the deadly H5N1 virus was found in some wet markets. What are the risks of bird flu? Let's learn more about its **preventions** in today's Hot Topics.

Poultry cull

THOUSANDS of chickens were killed in Sham Shui Po's Po On Road Market after being tested positive for H5N1 earlier this month. On 11 June, the government killed all live poultry in all markets across the territory to prevent the **outbreak** of the virus. Bird flu, also known as avian influenza, can be **transmitted** from poultry to human and causes death in severe cases. **Infection** may cause mild conditions with flu-like **symptoms** or may lead to serious respiratory diseases.

Useful link

Department of Health
<http://www.dh.gov.hk>

Q2 Wear a mask

IF you have flu-like symptoms or have been in contact with flu patients, you should wear a mask to prevent the spreading of the virus. Rearrange the steps of wearing a mask below.



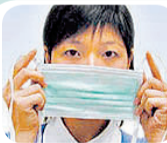
Q1 Preventions

WHICH of the following measures can prevent us from getting bird flu?

- A** Visit poultry farms.
- B** **Avoid** close contact with poultry.
- C** Wash hands with soap and water after contacting live poultry.
- D** Do not eat raw or poorly-cooked poultry products.
- E** Bring poultry products or live birds from other countries to Hong Kong.



A Tie the strings at the back.



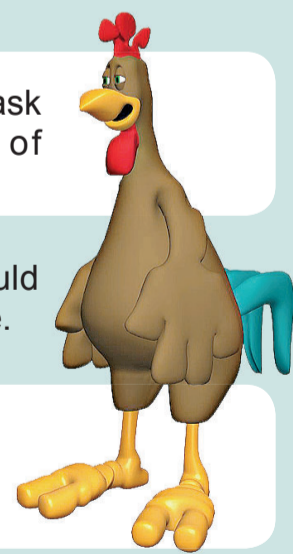
B Position the mask to the centre of your face.



C The mask should cover your nose.



D Press the wire at the edge to fit your nose.



Answers: Q1. B, C, D; Q2. B, A, D, C

Vocabulary

poultry (n) 家禽
cull (n) 剔除
prevention (n) 預防
outbreak (n) 爆發
transmit (v) 傳播
infection (n) 感染
symptom (n) 病徵
avoid (v) 避免