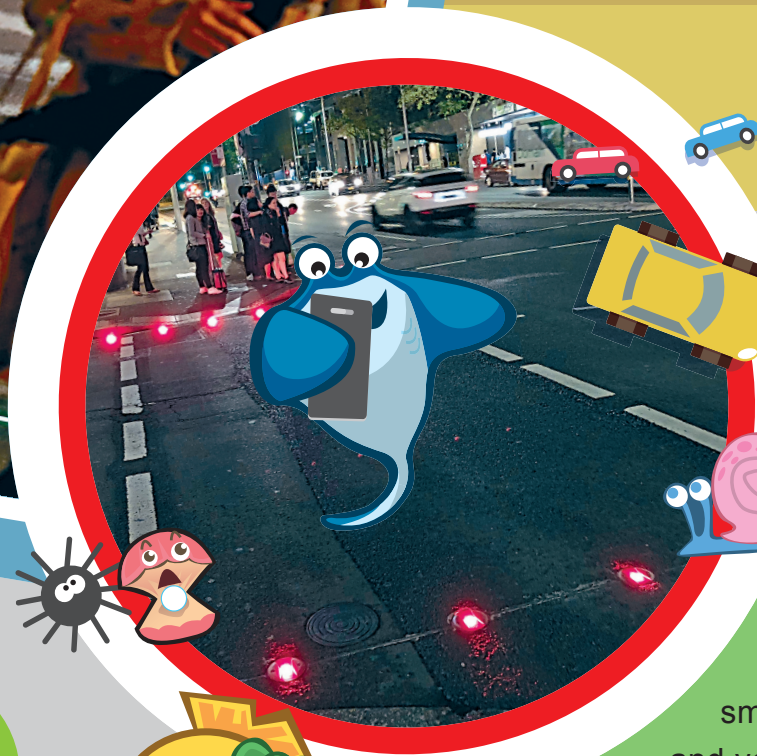




# Goodies

## Beware of

# cars!



I always  
play games  
on my  
phone!

It is  
dangerous if  
you walk while  
looking at  
your phone!

**H**AVE you ever walked around while looking down at your smartphone? That is very dangerous and you should look up so that you will not bump into people or worse, walk into ongoing traffic. But some city governments, like in Tel Aviv, Israel (以色列特拉維夫), have decided to just put down new traffic lights on the pavements themselves.





# Colours for traffic control



**M**ANY city governments, from Seoul (首爾) to Sydney (悉尼), are putting traffic lights on the ground. But how did traffic lights come about in the first place?



## The basic facts

TRAFFIC lights are for both **pedestrians** and cars. When the light is red, you should stay on the **pavement**. When the light turns green, you should cross the road quickly but safely.

For cars, it is somewhat different. The red light is the same. But there is also the **amber** light, which means they should prepare to stop. And the green light can be different – some of them are arrow-shaped, which tells the cars whether to go straight or turn left or right.

## Origins of the lights

BEFORE traffic lights, there were traffic police. Old **documents** show that London Bridge (倫敦橋), for example, had traffic police back in 1722. People then started using gas lights to direct traffic. The first **electric** traffic light was set up in Paris (巴黎) in the 1910s. Then in 1912, a police officer in the US created the first electric traffic light that used a green light to mean 'go' and a red one to mean 'stop'.

## In-ground traffic lights

SOME city governments have decided they should try to make sure people see the lights in other ways and not change the phone-users' **habits**. So they set up traffic lights on the edge of the pavement and hope the phone-users would notice.

Would you see these lights if the Hong Kong government installed them? Or should the government introduce ads telling people to look up while walking?



We should stop focusing on the screen and pay attention to traffic!



Spot three differences between the two photos.



Answers on P12