



<http://www.student.thestandard.com.hk>
<http://stedu.stheadline.com>



The creepy side of Japan



LOOK at that pretty woman with the long hair with her back to us. Or what about the brute with horns? Are you scared now? In Japan (日本), stories are told about hundreds of supernatural monsters and spirits, known as *yokai*. Learn more about these scary monsters if you dare!



Futarukuchi-onna

SHE appears to be a normal woman. However, she has another mouth on the back of her head that uses locks of hair as hands to eat. Some advice: never stand behind a Futarukuchi-onna! She may bite you when you least expect it!



Oni

A KIND of orc with multicoloured skin and huge horns on its head, the Oni certainly does not look like a monster you can joke around with. What is more, it is ferocious and carries a punishing, studded club called a *kanabo* ... so maybe it is better to leave this one alone!



Continues on G06-07.

Japanese monsters



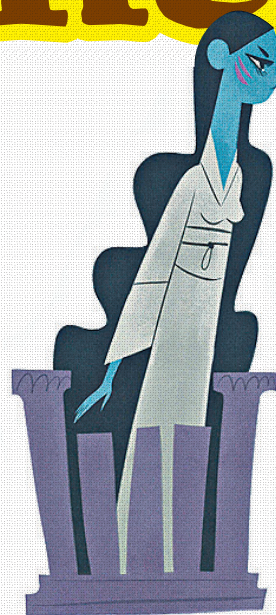
Rokurokubi

IT looks like a normal human being until nighttime, when it stretches out its disturbingly long neck. It is not usually violent, but it still enjoys frightening passers-by; it stands in front of them and extends its neck like a twisted **bobblehead**. If you are not expecting it, it is normal to be creeped out!



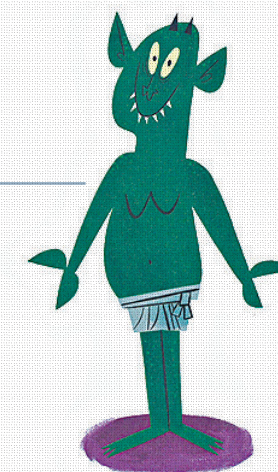
Ghost of Okiku

SHE looks like a long-haired girl dressed in white, and she slithers out of the well near Himeji Castle. She seeks revenge against the samurai who tortured and killed her. The problem is, the samurai is also dead now, so all she can do is **torment** innocent visitors to the castle.



Kami-kiri

IT is a sort of mischievous imp who enjoys tricking its **unsuspecting** victims by cutting their hair without their consent. This is why its hands are shaped like scissors. The Kami-kiri comes out at night and, under the shroud of darkness, breaks into people's homes and ... snip-snip! It cuts a lock of hair, sometimes more. As long as you do not mind wearing your hair short, you have nothing to fear from this monster.



Kitsune

THIS is a fox with **supernatural** powers that can turn itself into a human being whenever it wants. Its magic becomes stronger as it gets older. To find out how old it is – and how much power you will need to beat it – just count its tails. The maximum is nine!



Kappa

THIS is an aquatic monster with webbed feet, a tortoise shell on its back, and a monkey-like frame. Another special characteristic is also its greatest weakness: an **indentation** on the top of its head that is filled with water. If the water spills, the Kappa loses its supernatural powers. If someone bows to the Kappa, it must bow back, but by doing so, it drops the water!



Karura

THIS is a monster with the body of a man and the head of a bird, and it breathes fire from its beak. Its **arch-enemies** are snakes and dragons, but since you are neither of these, you should have nothing to fear from this creature.



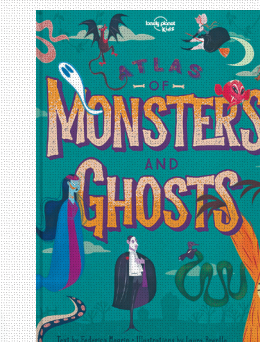
Yurei

IT is a restless soul that roams the world of the living and cannot move on. It has long black hair and is usually still wearing the white burial kimono from its funeral, which drapes over its legs. It appears to have no feet and floats in the air. There are a number of types of Yurei, from the Onryo, which search for revenge after death, to the Gaki, a spirit that is constantly **famished**.



Hyakki Yako

THIS is a **procession** of a hundred demons that come out at night in the summer. If you are near the procession, you may die instantly, even if none of the ghosts disturb you directly. In order to watch the parade safely, you need to be protected by a sacred ritual.



An excerpt from *Atlas of Monsters and Ghosts*, courtesy of Lonely Planet Kids. Lonely Planet Kids titles are available in all good bookstores.